



## ZANDFILTERS - FILTRES A SABLE

Omschrijving - Description	m³/u	Art. nr.	€
TRITON 40 side mount	8,5m³/u	1101.AF-19S8-TRV	541
TRITON 60 side mount	14m³/u	1101.AF-24S8-TRV	636
TRITON 100 side mount	22m³/u	1101.AF-30S8-TRV	942
TRITON 140 side mount (met klep - avec vanne)	32m³/u	1101.AF36S8-TRV	1.303
TAGELUS 40 top mount	8,5m³/u	1101.BF-19T6-TAG	380
TAGELUS 60 top mount	14m³/u	1101.BF-24T6-TAG	457
TAGELUS 100 top mount (met klep - avec vanne)	22m³/u	1101.BF-30T8-TAG	679
AZUR 19 side mount	9m³/u	1101.CF-19SF-AZ	391
AZUR 22 side mount	12m³/u	1101.CF-22SF-AZ	437
AZUR 26 side mount (met klep - avec vanne)	16,5m³/u	1101.CF-26SF-AZ	531
AZUR 15 top mount	6m³/u	1101.DF-15TF-AZ	263
AZUR 19 top mount	9m³/u	1101.DF-19TF-AZ	304
AZUR 22 top mount	12m³/u	1101.DF-22TF-AZ	389
AZUR 26 top mount (met klep - avec vanne)	16,5m³/u	1101.DF-26TF-AZ	476

## ZANDFILTERS SETS - SYSTEMES DE FILTRATION

Omschrijving - Description	m³/u	Art. nr.	€
AZUR SET top mount	4m³/u	1101.EFS-15A6-ST25	438
AZUR SET top mount	9m³/u	1101.EFS-19A6-ST51	577
AZUR SET top mount (met 6-wegkraan - avec vanne 6-voie)	12m³/u	1101.EFS-22A6-ST71	687

## KIEZELMERGEL FILTERS - FILTRES A DIATOMEE

Omschrijving - Description	m³/u	Art. nr.	€
NAUTILUS FNS 24 zonder klep/sans vanne	11m³/u	110108DIA024	1.111
NAUTILUS FNS 36 zonder klep/sans vanne	16m³/u	110108DIA036	1.179
NAUTILUS FNS 48 zonder klep/sans vanne	22m³/u	110108DIA048	1.225
NAUTILUS FNS 60 zonder klep/sans vanne	27m³/u	110108DIA060	1.346
2" HIGH FLOW VALVE		110108DIA000	168

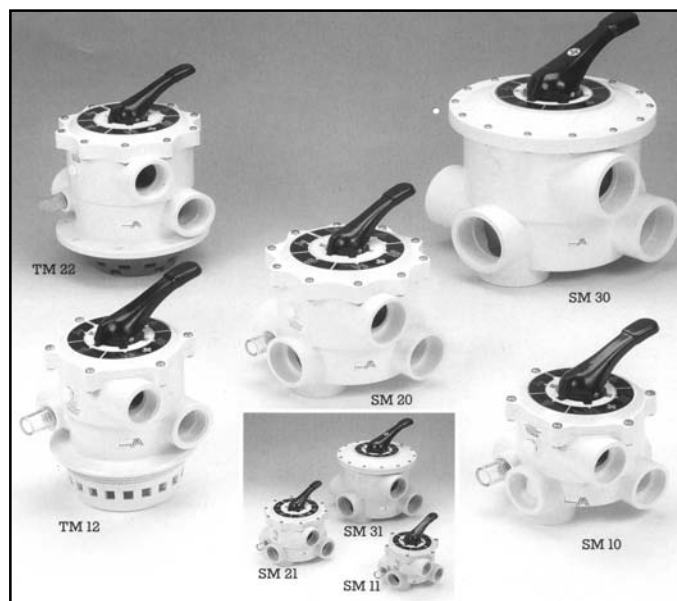
## FILTERMEDIUM - MEDIUM DE FILTRATION

Description	Size	Order nr.	€ / kg-ltr
Filterzand - Sable de filtration	0.4-0.8	1101.AA1	0,36
Kiezelzand - Gravier	3.1-5.6	1101.AA2	0,36
Diatomée aarde - sable diatomée	25kg	1101.AA3	55,13
Hydro-antraciet - hydro-anthracite	0.8-1.6	10.06.HN0002	34,20

TRITON XL



SRC



## PUBLIEKE FILTERS - FILTRES PUBLIQUES

### TRITON XL - 2,5bar working pressure

Description		Max. flow m <sup>3</sup> /h at 50m <sup>3</sup> /h/m <sup>2</sup>	Art. nr.	€
26	dia.1071 DN65-75mm	26	1101.20.XL4271-25	2.651
26CXL-4271-25 with 90mm sight glas	dia.1071 DN65-75mm	26	1101.20.XL4271-25S	2.846
61	dia.1623 DN100-110mm	61	1101.20.XL6377-25	4.430
61CXL-6377-25 with 90mm sight glas	dia.1623 DN100-110mm	61	1101.20.XL6377-25S	4.631
97	dia.2045 DN125-125mm	97	1101.20.XL7978-25	5.893
97CXL-7978-25 with 90mm sight glas	dia.2045 DN125-125mm	97	1101.20.XL7978-25S	6.104

### TRITON XL - 4,0bar working pressure

Description		Max. flow m <sup>3</sup> /h at 50m <sup>3</sup> /h/m <sup>2</sup>	Art. nr.	€
26	dia.1071 DN65-75mm	26	1101.20.XL4271-40	2.856
26CXL-4271-25 with 90mm sight glas	dia.1071 DN65-75mm	26	1101.20.XL4271-40S	3.067
61	dia.1623 DN100-110mm	61	1101.20.XL6377-40	5.152
61CXL-6377-25 with 90mm sight glas	dia.1623 DN100-110mm	61	1101.20.XL6377-40S	5.392
97	dia.2045 DN125-125mm	97	1101.20.XL7978-40	6.615
97CXL-7978-25 with 90mm sight glas	dia.2045 DN125-125mm	97	1101.20.XL7978-40S	6.886

### SRC - 2,5bar working pressure

Description	Height	Dia.	Max. flow m <sup>3</sup> /h at 50m <sup>3</sup> /h/m <sup>2</sup>	Art. nr.	€	
SRC 61-16	D 63	1600	610	14,5	1101.21.SRC01	1.180
SRC 61-18	D 63	1800	610	14,5	1101.21.SRC02	1.395
SRC 76-16	D 63	1600	765	22,5	1101.21.SRC03	1.521
SRC 76-18	D 63	1800	765	22,5	1101.21.SRC04	1.709
SRC 92-18	D 90	1800	920	32,5	1101.21.SRC05	2.162
SRC 92-24	D 90	2325	920	32,5	1101.21.SRC06	2.422
SRC 108-25	D 90	2450	1080	46	1101.21.SRC07	4.137
SRC 125-25	D 110	2530	1250	61,5	1101.21.SRC08	5.680
SRC 145-25	D 125	2710	1450	82,5	1101.21.SRC09	7.338
Optional sight glass					1101.21.SRC10	401

## KLEPPEN - VANNES

### KLEPPEN MANUEEL - VANNES MANUELLES

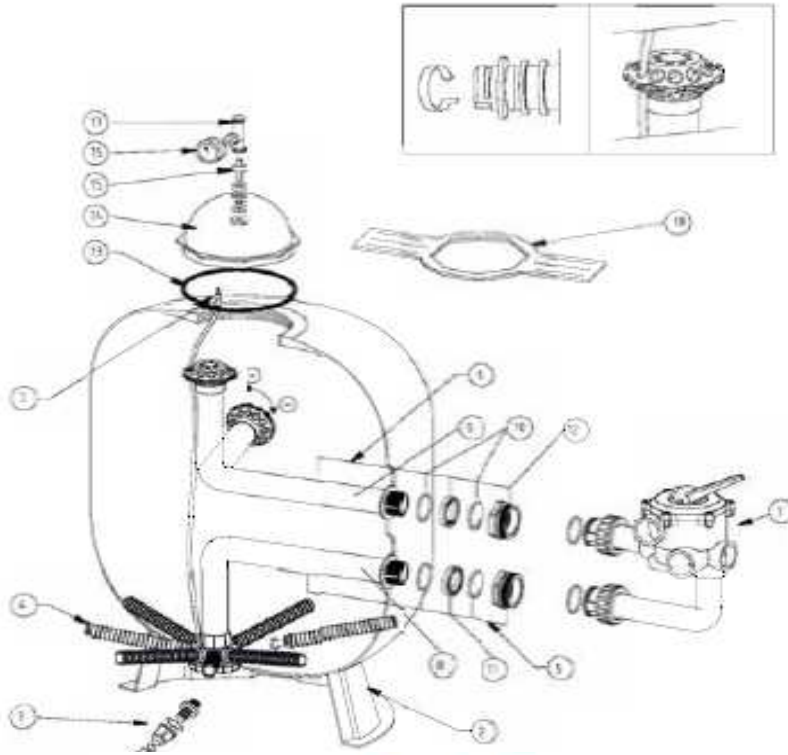
Omschrijving - Description			nr.	Order nr.	€
TRITON	40-60	1 1/2 "	3.5	1101.E-26-1070	115
TRITON	100-140	2 "	3.5	1101.E-26-1071	168
TRITON		3 "	3.5	1101.E-26-9003	702
TAGELUS	40-60	1 1/2 "	3.5	1101.E-27-2026	148
TAGELUS	40-60	1 1/2 " (old model)	3.5	1101.E-27-2027	160
TAGELUS	100	2 "	3.5	1101.E-27-2029	164
AZUR	6-weg	1 1/2 " side m	3.5	1101.E-26-1069	123
AZUR	4-weg	1 1/2 " top m	3.5	1101.E-27-2030	72
AZUR	6-weg	1 1/2 " top m	3.5	1101.E-27-2026	148

### AUTOMATISCHE KLEPPEN - VANNES AUTOMATIQUES

Omschrijving - Description		nr.	Order nr.	€
TRITON	1 1/2 "	3.5	1101.E-25-8001	1.508
TRITON	2 "	3.5	1101.E-25-8002	1.536

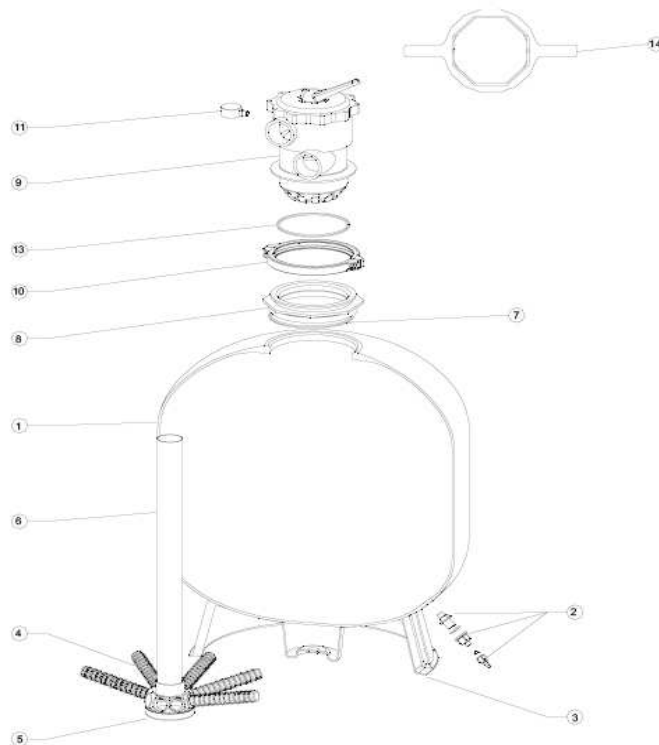
# Triton™

Replacement Parts (for filters starting as from serial number EP022882210)



# Tagelus™

Replacement Parts



## SPARE PARTS TRITON & TAGELUS

### TRITON ONDERDELEN - TRITON PIECES DETACHEES

Omschrijving - Description	nr.	qty/filter	Order nr.	€
6-pos. Valve 1 1/2" for Triton 40 + Triton 60	1	1	E-26-1070	115,26
6-pos. Valve 2" for Triton 100 + Triton 140	1	1	E-26-1071	168,38
base for Triton 40 + Triton 60	2	1	G-15-4524	51,74
base for Triton 100 + Triton 140	2	1	G-15-4525	150,51
drain tap 3/4" (complete)	3	1	G-15-4695	12,77
diffuser pipe for Triton 40	4	8	G-30-1904	4,51
diffuser pipe for Triton 60	4	8	G-30-2404	4,30
diffuser pipe for Triton 100	4	8	G-30-3004	20,21
diffuser pipe for Triton 140	4	8	G-30-3604	24,77
complete bottom diffuser system for Triton 40	5	1	G-30-1905	120,44
complete bottom diffuser system for Triton 60	5	1	G-30-2405	124,45
complete bottom diffuser system for Triton 100	5	1	G-30-3005	170,74
complete bottom diffuser system for Triton 140	5	1	G-30-3605	199,74
complete top diffuser system for Triton 40	6	1	G-30-1906	93,57
complete top diffuser system for Triton 60	6	1	G-30-2406	96,58
complete top diffuser system for Triton 100	6	1	G-30-3006	96,79
complete top diffuser system for Triton 140	6	1	G-30-3606	107,84
stainer for air relief tube	7	1	G-TT-AIR	0,29
closure kit complete, consisting of :	13->17	1	G-15-4600	141,34
o-ring closure 8 1/2"	13	1	G-15-2501	6,37
closure 8 1/2" transparent	14	1	G-15-2500	95,81
tee assembly (complete)	15	1	G-15-4687	8,90
pressure gauge	16	1	G-15-2046	15,92
plastic air bleeder	17	1	G-15-4689	14,53
wrench 8 1/2" for cap	18	1	G15-4513	13,03
<b>FOLLOWING COMPONENTS ARE ALSO AVAILABLE SEPARATELY :</b>				
for bottom diffuser system :				
pipe set+air relief tube+diffuser head for Triton 40	8	1	G-30-1908	70,28
pipe set+air relief tube+diffuser head for Triton 60	8	1	G-30-2408	73,83
pipe set+air relief tube+diffuser head for Triton 100	8	1	G-30-3008	79,42
pipe set+air relief tube+diffuser head for Triton 140	8	1	G-30-3608	108,41
o-ring for adjusting ring	10	2	G-15-4492	1,81
adjusting ring external	11	1	G-TT-2K	8,47
adjusting and connection nut for multiport valve	12	1	G-TT-BHD	10,40
for top diffuser system :				
pipe set+diffuser head for Triton 40	9	1	G-30-1909	58,44
pipe set+diffuser head for Triton 60	9	1	G-30-2409	62,43
pipe set+diffuser head for Triton 100	9	1	G-30-3009	79,42
pipe set+diffuser head for Triton 140	9	1	G-30-3609	108,41
o-ring for reducing ring	10	2	G-15-4492	1,81
reducing ring external	11	1	G-TT-ADR	8,47
adjusting and connection nut for multiport valve	12	1	G-TT-BHD	10,40
<b>MAINTENANCE TOOLS</b>				
metal wrench for adjusting nut 2" external	-		G-WRENCH-TT	357,24

### TAGELUS ONDERDELEN - PIECES DETACHEES TAGELUS

Omschrijving - Description	nr.	qty/filter	Order nr.	Euro
drain kit - complete	1	1	--	
base for Tagelus 40 + Tagelus 60	2	1	1101.G-15-4695	12,77
base for Tagelus 100 + Tagelus 140	3	1	1101.G-15-4926	31,52
lateral for Tagelus 40	4	6	1101.G-SS6-025314	4,51
lateral for Tagelus 60	4	6	1101G-SS6-025373	4,87
lateral for Tagelus 100	4	8	1101.G-SS8-025532	14,27
hub laterals for Tagelus 40 + Tagelus 60	5	1	1101.G-SS6-025	20,76
hub laterals for Tagelus 100	5	1	1101.G-SS8-025	36,20
PVC pipe for Tagelus 40	6	1	1101.G-PVC-5018/1	3,70
PVC pipe for Tagelus 60	6	1	1101.G-PVC-5018/2	4,61
PVC pipe for Tagelus 100	6	1	1101.G-PVC-6319	20,16
O-ring closure for Tagelus 40	7	1	1101.G-15-4493	6,01
O-ring closure for Tagelus 60	7	1	1101.G-15-2501	6,37
adaptor for Tagelus 40 + Tagelus 60	8	1	1101.G-15-5225	23,00
adaptor for Tagelus 100	8	1	1101.G-15-4514	46,70
valve for Tagelus 40 + Tagelus 60	9	1	1101.E-27-2026	148,34
valve for Tagelus 100	9	1	1101.E-27-2029	164,37
clamp for Tagelus 40 + Tagelus 60	10	1	1101.E-27-2025	11,57
clamp for Tagelus 100	10	1	1101.E-27-2028	15,70
pressure gauge	11	1	1101.G-15-2047	13,98
sand guide	12	1	1101.G-15-5051	4,87
O-ring for Tagelus 40 + Tagelus 60	13	1	1101.G-28-1008	11,38
O-ring for Tagelus 100	13	1	1101.G-25-0001	4,39
wrench closure for Tagelus 40 + Tagelus 60	14	1	1101.G-15-4512	11,22
wrench closure for Tagelus 100	14	1	1101.G-15-1608	155,04
<b>SERVICE TOOLS</b>				
Sandvac (vacuum sand drain system)			G-54-2090	186,18